

OPERATION MANUAL ELECTRONIC SCALE



A. FEATURES

1. 0.5" large RED LED display for easy reading even at dark environment.
2. Used LOAD CELL (Foil strain gages) transducer & DUAL-SLOPE A/D converter circuit, highly accurate & resolution (1g/0.05 oz).
3. Small size, easy to carry and transportation.
4. Auto Zero.
5. Multiple Tare and Gross Weight.
6. Exclusive LSI and Micro-computer circuit design.
7. Available for OFFICE, HOME, LABORATORY, DIY, HOBBIST and other general applications.

C. BATTERY INSTALLATION

1. Six 1.5V AA size battery are required.
2. To install battery:
 - (a) Open battery cover located at the bottom of the scale (ref. fig 1).
 - (b) According to the device instruction, place battery into the battery compartment.
 - (c) Replace battery cover, then the scale is now ready for battery operation.

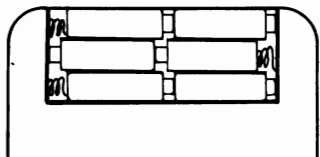
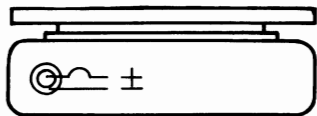


fig. 1.



DC9V Adapter Receptacle

fig. 2

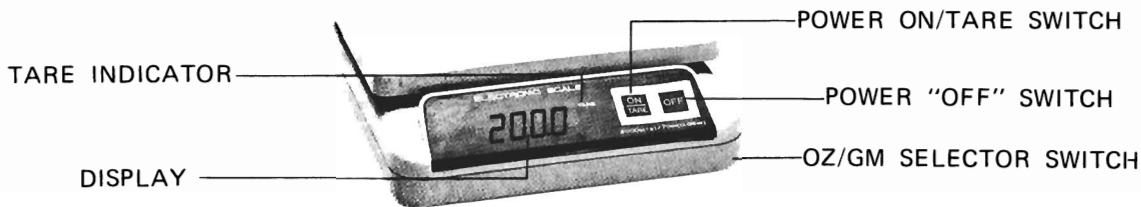
D. DV 9V AC/DC ADAPTOR OPERATION

(Adapter is optional not included).

1. Your precision scale will also operate on the household ACV power source (110/220/240 ACV) with a DC 9V AC/DC Adapter/capacity 300 mA.
2. Plug the jack from the Adapter into the receptacle, which is located at the left side of the back scale (ref. fig 2). Plug the Adapter into desired wall socket.
3. The scale is now ready for A.C. operation.

E. MEASURING PROCEDURE

1. Place scale on a flat hard surface.
2. Slide the oz/gm selector switch, which is located on the right down side (ref. fig 3) to the desired mode of measurement.
3. Turn scale ON by pushing the "ON/TARE" switch (ref fig 3) on front of scale. The display will show " □ □ □ □ " for a few seconds, then "0" will appear in the display.
4. After "0" show on the display, apply the load gently. Do not exceed the capacity of the scale.
5. After weighting, turn scale off by pushing the "OFF" switch. This will help to preserve the life of the battery.
6. Over weighting, the display will show "EEEE".



F. TO USE THE MULTIPLE TARE AND GROSS WEIGHT FEATURES.

1. Place first object on scale and weight as in section E above.
2. After weighting the first item, press "ON/TARE" switch and scale will automatically reset to zero. Display will show an indicator lamp in the upper right corner of display (ref fig. 3). Scale is now ready to weigh next item.
3. Place next item to be weighted onto scale. Scale will give weight of the second item only.
4. Press "ON/TARE" switch again to get the gross weight of both items combined. Repeat steps 3 & 4 for additional items.
5. Caution should be taken not to exceed the total capacity of the scale (2000 g or 70 oz). Exceeding this amount will damage scale and will void warranty.

G. LOW BATTERY INDICATION

If the battery is weak, display will show "LO". This reminds user to replace new battery.